

CCCP News

Gloucester
City Centre Community
Partnership Newsletter

Spring 2010

In this issue:

Policing
All the latest
updates

CCCP website

**Useful
numbers**

200 Club
The chance to
win £200-00

Car Club
Is it for you?

**Greyfriars
update**

Heritage:
Lisa Donel
digs Gloucester

Clutch Clinic
treasures

Summer Walks
in the City

Planning,
the plans so far

Rubbish
report

**Kimbrose
artworks**
A historic
approach

*Where's this? Spain perhaps or
the south of France. Neither,
it's a medieval building in
the centre of Gloucester
See inside for details...*



Gloucester City Centre Community Partnership: our aims.

The Partnership covers the Westgate Ward of the City, effectively the City Centre, Docks, Quays, Hempsted, Alney Island, Pool Meadow and St Oswalds. It was set up to reflect the views of the residents to the various bodies which make decisions about your lives – our overall objective is to improve life in the City. We have regular meetings on numerous issues - you are welcome to come along to any meeting and have your say in the future of your community. **If you want to know more please do get in touch by contacting: info@gloscccp.co.uk – or write to GLOSCCCP, P.O. Box 3155, Gloucester, GL1 9AA**

Policing matters, latest reports:

The City Centre Community Partnership works with the City Centre and Hempsted Safer Community Teams in their efforts to make the area safer for all. The CCCP has recently held several surveys and meetings involving residents and arrived at a list of your policing priorities. The Community Beat Officers PC Mark Mansfield (City Centre) and PC Mark Evans (Hempsted) have outlined below the key priorities and their actions.

The CCCP not only monitor your top three priorities but also follow up all of the concerns you have raised working with the police and other bodies to find solutions. If you want a copy of the latest list and pending actions contact: info@gloscccp.co.uk

The City Centre Safety Community Team

PC Mark Mansfield reports: The Team has been working relentlessly to resolve the residents' three main priorities as identified by CCCP in the City Centre area. These priorities are to cut **anti-social behaviour**, prevent **vandalism** and stop **cycling on pavements** at all times and within the City Gate streets during the daytime.

An operation was recently carried out in the Gate Streets to deal with the Cycling issue. Several people were given fixed penalty tickets, others under the age of 16 were officially warned and details recorded.

We have noticed an increase in the number of people begging in the City Centre. The perpetrators have been dealt with swiftly. They have either been arrested or reported by summons for their offences. The City Centre is still covered by a dispersal order to assist the Officers tackle anti-social behaviour (ASB). This gives Police Officers the power to issue tickets under Sections 23 & 30 of the ASB Act 2003 to individuals who are suspected of causing alcohol related crime and disorder. Section 30 allows Police officers & PCSOs to remove a group of two or more who either have caused or are likely to cause harassment, alarm or distress to others. This Dispersal order has proved an invaluable tool in policing the community effectively, evidenced by the reduction in crime for our area.

Overall, statistics in the Gloucester area show the number of crimes in this area over the past three months has decreased from 3399 to 2815, a reduction of 17.2% when compared to the same three month period last year. This is excellent news.

In February the first Street Pastors walked the streets of Gloucester on a Friday night, Street Pastors are an inter-denominational Church response to urban problems, engaging with people on the streets to care, listen and dialogue. David Burrowes MP (as at time of publication!) said "Street Pastors is about Christians rolling up their sleeves and getting involved in practically responding to the problems of crime and safety. They are like beacons on our streets and I want to see them shining brightly in every constituency"

City Safer Community officers have linked with civil enforcement officers over the past two weeks in tackling abuses of the Blue Badge scheme. Officers scoured the City Centre area checking the validity of disability Blue Badges displayed in cars. The team detected several illegally displaying Blue Badges. These badges were seized and the owners dealt with appropriately.

The Police Team continues to work with the CCCP This is an excellent, positive and effective link working to make the City Centre safe for all

The Hempsted Safer Community Team consists of a community beat officer and three Police Community Support Officers (PCSOs) dedicated to the area, working closely with the Hempsted Community Panel, made up of local residents and members of key local organisations.

Anti-social behaviour on the canal towpath Patrols on the towpath are being increased to stop this and identify culprits; boat owners and towpath users are being consulted to establish extent of problem. The team is working with British Waterways to cut back overgrowth, Sainsburys and Bloor Homes to ensure litter is removed.

Cycling related issues Due to complaints about cycling offences law enforcement operations will be conducted including regular patrols of Hempsted, Secunda Way and Llantony Road. Fixed penalty notices and warnings will be issued to cyclists not displaying lights at night or riding on the pavement. With the support of CCCP and CDRP a community event in Hempsted is planned. This will include offering road safety and crime prevention advice regarding cycling.

Parking Hempsted Lane and surrounding industrial units Patrols of this area are being increased to observe the parking issues and to liaise with local businesses. Following consultations double yellow lines are now in place in Hempsted Lane. However the Police Team and CCCP feel that parking in this part of Hempsted needs a multi-agency approach. The Police Team with CCCP support will be calling a meeting of City and County Councils and local businesses including the College in the hope of achieving positive solutions.

City Centre contact:

gloscity-stc

@gloucestershire.police.uk

0845 090 1234

GLOUCESTER



Crime and Disorder
Reduction Partnership



**Main police
contact number**

0845 090 1234

Hempsted police contacts:

mark.evans

@gloucestershire.police.uk

adam.stevens

@gloucestershire.police.uk

jordan.white

@gloucestershire.police.uk

manja.tunney

@gloucestershire.police.uk

Residents' views can be voiced through the CCCP by emailing info@gloscccp.co.uk or attending one of the regular public meetings the details of which will appear on the CCCP website.

Policing Pledge.....The Safer Community Teams have produced a Policing Pledge – it is a promise to the residents in the City Centre and Hempsted as to the level of service they intend to achieve in providing a 21st century service to us all. Copies available though the CCCP website:
www.gloucestercccp.co.uk

Fed up with grotspots in your area? Tell the Council about it, or report it to us here at the CCCP and we'll try to help get something done.

City Council: the number to call:

01452 396396

Police: the number to call for non emergency:

0845 090 1234

The Numbers Page:
Snip it out and
put it near
the phone

Crimestoppers

0800 555 111

Samaritans

01452 306333

Don't forget your Westgate Councillors are also there to help with any problems. Their contact details are:

Cllr. Gordon Heath **01452 501881**
gordon.heath@gloucester.gov.uk

Cllr. Jeremy Hilton **01452 501206**
jeremy.hilton@gloucestershire.gov.uk

Cllr. Pam Tracey **01452 413497**
pam.tracey@gloucestershire.gov.uk

New M.P.? Who's he? At the time of going to press, we do not know the election result, but full details of our new M.P. and his contact details will be posted on our website.

Whoever is elected can be sure of that Gloucester CCCP will be there to help them to get the very best for the residents of the City Centre and we wish them luck.

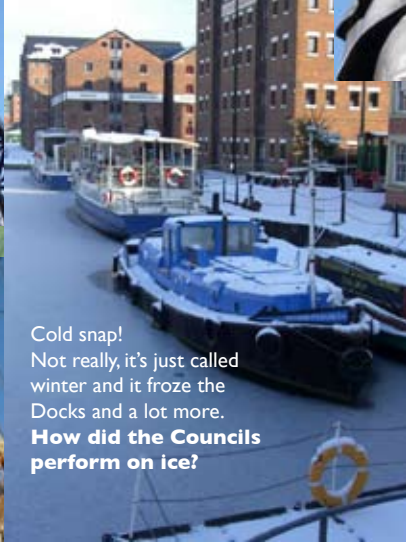
info@gloscccp.co.uk www.gloucestercccp.co.uk

City centre images from 2009 and 2010

Just a small selection of images of our area from the last 12 months. Our pictures tell a story or beg a question.

More can be seen on our website.

The newly refurbished park gate light, **when can we expect them to paint the railings?**



Cold snap!
Not really, it's just called winter and it froze the Docks and a lot more.
How did the Councils perform on ice?



The Tall Ships in the Docks, **when can we expect them to return?**



Background photo is of some of the magnificent trees in the Park,
How well are they managed?

Robert Raikes statue looking magnificent in the park.
Is the park a million pounds better?

Kimbrose Square, an unusual view from the street? **Has anyone asked your view?**



Is Gloucester City doing anything about World Environment Day on 5 June? We are! Take a look at the website for details: www.gloucestercccp.co.uk

A Talbot Bottle factory label, the factory was located on the site of the Clutch Clinic an area that is going through changes now.

**Join our 200 Club
Help your
community,
and get the chance of
winning
up to £200-00
every quarter.**

Would you like the chance to win cash prizes of up to £200 four times a year and help the CCCP to fund its important community projects?

One stake costs only £20 for a whole year!

Hurry: Applications for this year have to be in by 15 June 2010

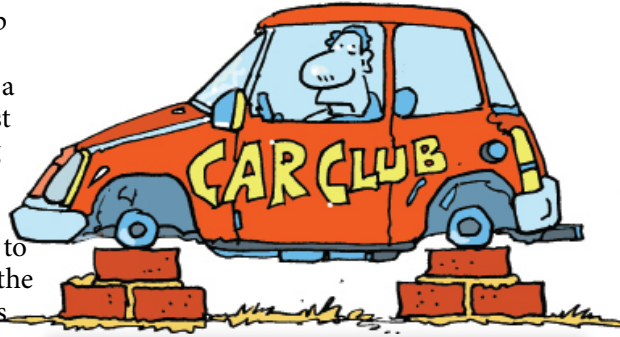
Don't miss out – the maximum number of members is only 200.

Application forms and more information are available on the website or get in touch using the contact details below and you will be sent all the information.

For further information
info@gloscccp.co.uk or write to
**GLOSCCCP, PO Box 3155,
Gloucester GL1 9AA
or visit us on-line
www.gloucestercccp.co.uk**

The City Centre Car Club, is this a club you'd really like to join?

Do the responsibilities of car ownership get you down? Have you heard of car sharing? The City Council is setting up a Car Club Scheme in 2010. Over the past few years developers have been making payments to the City Council in place of providing parking spaces on new developments. This has as we know led to more parking problems in Westgate as the increased number of residents with cars fight for the available spaces.



How will the Car Club work? To start with the City Council will pay £70,000 to a private company to buy 5 VW Blue Motion Polos. This company will run the scheme for 5 years organise the bookings and maintain the vehicles. Parking bays/pick-up points will be created at random in the city centre. You book the vehicle, pick it up and then return it to the parking bay when you have finished with it. You need to be a member of the Club, either paying a deposit or a monthly deposit waiver, an hourly charge and a mileage charge.

The cars will be available for businesses as well as all residents – not just those on the new developments, but the City Council has assured CCCP members that residents will be able to book the cars at any time.

The City Council has not carried out any consultation with residents so it is not known how many members are likely to sign up nor whether this scheme is viable on the costings proposed. The CCCP is pressing the City Council to organise a public meeting so all the facts can be aired and questions answered. The CCCP is interested to hear your views and questions. Would you sign up?

A great new opportunity for community activity in the city centre

THE GREYFRIARS COMMUNITY FACILITY

Linden Homes have promised to provide 200 square metres of indoor space for use by local people in a new building opposite the Library on the old Gloscat media site in Brunswick Road. To give you an idea of the space – it is comparable to Northgate Hall in St. John's Lane or the ground floor of WH Smith in Eastgate Street.

The CCCP is taking the lead in agreeing the details of the space with Linden Homes, how it will be laid out and who will use it. The CCCP is determined that all age groups and local interests should have a say in the plans.

This is too good an opportunity to leave to chance. Contact us with your ideas for the space. What community activities would you like to see there – classes, workshops, coffee mornings, for example? Are you looking for a suitable venue to run your activity? Come and work with the CCCP to ensure this space is genuinely built for the community.

Gloucester City Council's Historic Environment Officer, Lisa Donel, really digs Gloucester

Born in Philadelphia, USA, Lisa was brought up in a rural environment. Lisa always knew she wanted to “dig” and her archaeology experience began as a teenager on a dig at Benjamin Franklin House in Philadelphia. She discovered the University of Arizona in Tucson had a group that went out to dig every weekend so off she went to join them. She has continued to dig in diverse ways ever since. In her last year at Arizona, Lisa applied to a number of universities and as a ‘dare’ included Cambridge and Oxford. It was a good move and at Cambridge she gained her post-graduate certificate in Pre-History Archaeology, followed by her Doctorate.

Archaeology has enabled Lisa to work in many places in the UK from The Orkneys to South Wales. She took a post with the Royal Commission on Historical Monuments in 1979 representing the North East and North West of England and was thrilled to be based in York. While in the north Lisa compiled the Excavations Index for the North of England. At the Quayside in Newcastle-on-Tyne she directed the archaeology and continues to lecture on the extraordinary things unearthed there.

Prior to coming to Gloucester Lisa was the Field Team Manager in the Cathedral city of Lincoln. There is an attitude of mind there, she feels, where the citizens understand and respect their heritage. She wants to encourage this in Gloucester because the city has so much to offer.

Lisa settled here in 1997 when she became the City Council's Project/s Officer responsible for building up the contracting side for the City Archaeology Unit.

At that time most of the archaeological contracts were done in-house. Since 2004 archaeologists from outside are engaged to carry out excavations for the city which can mean that discoveries are not always seen quickly in Gloucester. Information is now updated and stored on computer where it can be readily accessed by City Council personnel to assist planners, developers and citizens in general. Lisa Donel's official title now is Historic Environment Officer within the Historic Environment Team for the city. The Team's archaeological work is supported today by the planning process.

Her hopes are that the public, whatever age group or ability, will develop and initiate their own heritage with initial professional guidance. She believes there is no reason why Gloucester's heritage should not be as well presented as that of York. The city has not had the opportunity so far to develop its heritage. Now is the time to start and the involvement of the people is the way to achieve it. To bring heritage to the public and the public to heritage via the museums and outreach programmes can be done. Lisa will be pleased to hear from anyone interested and can be contacted by email: **lisa.donel@gloucester.gov.uk**

Anyone wanting proof of community involvement on a heritage project, can see how this has worked in regard to the former Clutch Clinic in Commercial Road as described in the following article.

You can always get our latest news on the ccp website, regularly updated with everything that's happening in the area.

www.gloucestercccp.co.uk

The city of Gloucester is rich in heritage. If one looks around and has the will to learn even a Victorian building can turn up fascinating facts. Take the premises at No.6 Commercial Road for instance. This is now being demolished to make way for a new building that will abut the 13th century Blackfriars Priory.

Clutch clinic project: a tale of bottling, fizz, cars and heritage

It was built in red brick with patterning in contrasting coloured bricks. Carved in stone across the top of the front façade were the words *TALBOT AND CO, ESTABLISHED 1845, MINERAL WATER WORKS*. Originally on two floors, the Victorian ground floor façade with an arched entrance for horse-drawn vehicles is long gone.

The grounds of Blackfriars' Priory once extended across the site and the archaeology having been completed, the City Heritage Team asked for volunteers to record what visibly remained above ground. Gloucester residents responded with enthusiasm in January 2010. The lower half of the building was modern and latterly used as a garage where new clutches were installed, with a pool hall on the first floor. The *Clutch Clinic* followed on naturally from the motor car showroom and garage set up in the 1950s. Every door frame, wall, window, floor, latch and roof line was measured and carefully noted.

Back in 1851 a Gloucester grocer in lower Northgate Street was selling mineral waters. He had discovered a commodity that the populace wanted – a forerunner of Pepsi Cola and Coca-Cola no doubt, except that he only knew then about

soda water and ginger beer. Such drinks were already established thanks to Dr. Joseph Priestley who infused water and carbon dioxide to make a sparkling drink. Commercial Road was built by this time and linked the Quay and Docks area with Southgate Street, one of the four principal city streets.

The grocer was Hampshire-born Thomas Talbot who wanted to expand his business. In the 1870s he purchased the site in Commercial Road and the adjoining stone-faced house at number 4 as the family home. He created a business empire using not only his new Victorian premises but also older buildings that were part of the east, south and west range of the former Blackfriars Priory. In 1884 Talbot and Company carried off the top prize for their excellent products at the International Health Exhibition in London. Thereafter, the company boasted of the fact on their letter headings and in their advertising.

Talbots' advertisements showed that they sold seltzer water, potass water, soda water, magnesia water, lithia water, lemonade, ginger ale, quinine tonic water and aerated lime juice. In the 20th century, they bottled the products of other drinks makers – Bass, Worthington, Guinness and cider and the non-alcoholic Vimto.

In the 1950s, Talbots reduced the size of their operations and sold off the 1870s building to the Westgate Motor House. It became a very smart motor car showroom at the front with workshops behind. There, the latest Triumph and Singer cars were displayed under modern lighting. Talbots meanwhile, continued their bottling business and used the Ladybellegate Street entrance for their distribution and delivery vehicles. They had at least four lorries delivering mineral waters and crisps to

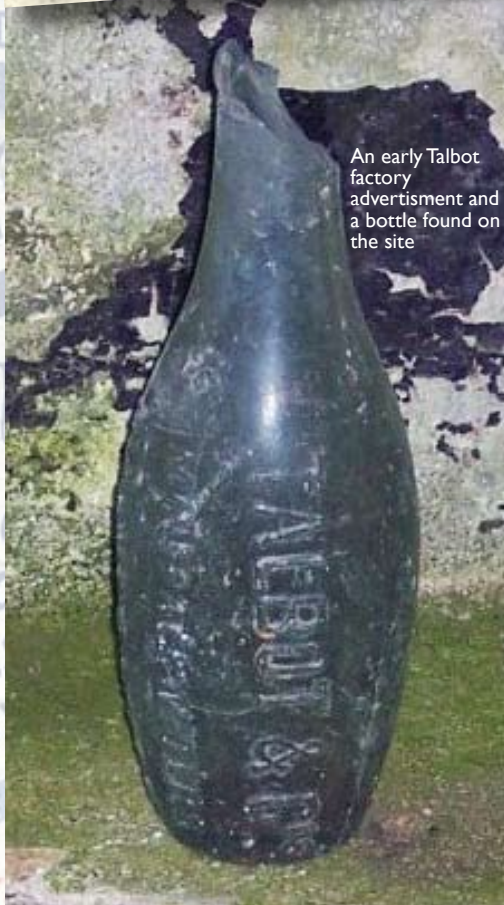
hotels and public houses all over the city and the county.

As the *Clutch Clinic Project* unfolded and was reported in the local press, people came forward who told of their or their families' experiences working for Talbots. Others had worked in the motor trade or on the premises when it changed from a mineral water bottling works to a modern car showroom with the most up-to-date ceiling and lighting arrangements that made the cars look desirable.

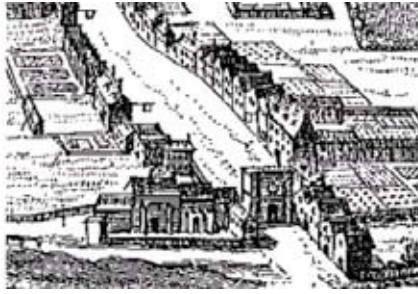
The volunteers came from a wide range of backgrounds and skills, some relatively new to the area, and had become well aware of the local and industrial heritage of the city. The knowledge of those who had been in the construction industry enabled a very detailed survey to be conducted. Others looked at the historical aspects and spent time in Gloucestershire Archives turning up some fascinating facts and unique drawings that give an insight into the scale and style of the mineral water works. Detailed reports have been written and will be stored at the City Museum for others to see.

One team member has known Gloucester all her life. She visited often as a child and later lived in various areas of the city. She recalls her first home in Ladybellgate Street where the backyard was a part of the old Priory's cloisters, approached through an arched doorway set into a very thick stone wall of the former Priory's refectory. The clatter of Talbots' bottles was a familiar sound to her in the late 1950s and early 1960s. The house is in a terrace of three on the site and two are used today by the GHURC. She thought the Clutch Clinic Project "a wonderful idea and I am pleased to have been able to take part in it and to be guided by the Heritage Team.

Projects like this with the involvement of local people of whatever age or ability are good and can leave information on record for others to use. I have made new friends, increased my knowledge of Gloucester and very much look forward to being part of what may come next from the Heritage Team."



An early Talbot factory advertisement and a bottle found on the site



KIMBROSE SQUARE ART A HISTORIC APPROACH TO THE SOUTH GATE

The transformation of Kimbrose Way into Kimbrose Square will culminate in the installation of a tower-like sculpture and an 'art wall' inspired by the story of St. Kyneburgh, near the site of the medieval chapel dedicated to her. Kyneburgh (Kimbrose is thought to be a corruption of her name) was the Saxon princess who became the first abbess of the monastery that preceded Gloucester Cathedral. According to legend Kyneburgh, wanting to escape an arranged marriage, was hidden by a Gloucester baker whose wife then killed her by throwing her down a well. This became known as St. Kyneburgh's Fountain, attracting pilgrims because of its supposed healing powers, and later the Chapel was built to house her relics.

The GHURC's 'Design Panel' recently announced its choice of artist, London-based Tom Price, with an artist's impression of the concept. This is another example of a missed opportunity to involve local people in the regeneration of the city. The negative comments posted in the media are discouraging, and could perhaps be reduced by a greater involvement and understanding of the process. What are your views? The CCCP welcomes your views on this or any other matter.

For further information about any articles on this page contact:
info@gloscccpc.co.uk or write to
**GLOS CCCP, PO Box 3155,
Gloucester GL1 9AA**



A photomontage of how the artwork will look...

...and the view from underneath

Summer walks...join us!

Join us for a Summer Evening Walk – it's healthy and informative. Last year's walks were very successful despite the atrocious weather for one.

The Docks Walk, which included a tour of the Waterways Museum attracted 65 people and raised £200 for Museum funds.

Land Share

Could it be for you?

The UK's **Land Share Scheme** brings together gardens and keen gardeners (who are often those on an allotment waiting list), in order to transform all or part of a garden space into a thriving vegetable plot. Both parties agree to share in the garden produce.

Any Westgate resident can apply to participate in the scheme and there are no costs to either party. Potential gardens should be at least 5 x 4 metres or equivalent in size.

In Gloucester, **GL Communities** is the support organisation for the scheme. It makes sure that all gardens and garden owners (or tenants, with the landlord's permission) are well matched according to their interests and requirements. Its **Gardening Club** members ensure that everything runs smoothly and that any problems which might arise are promptly resolved.

Interested? Find out more from Paul Stepney or Matt Hill, tel 01452-505544 (days) or email pauls@matsonnp.co.uk

There are two Walks planned for 2010 – Meeting at 7 p.m. at Gloucester Docks Car Park - Rain or Shine.

Thursday 8 July 2010: Alney Island. The whole walk is on the level, but a lot of it is on grass paths so if it has rained before the walk the route could be muddy and the grass could make the lower part of the legs wet. Distance 2.5 miles.

Thursday 15 July 2010: Down the canal to Hempsted and Return via Lady Well and Sudmeadow Road. If the gate into the Secunda Priory is open there will be a short detour round the grounds. A lot of the route is on rolled stone paths or pavements, but there are some grass paths as well. There is one small hill to climb to get into Hempsted, nothing arduous. Distance 3.5 miles.

Both walks will be led by a qualified walk leader.

**Contact for walks information only:
01452 524654**

**All are welcome – no charge
but donations always welcome.**

Planning Developments in Westgate

The CCCP monitors all planning applications and has submitted comments on 19 applications in 2009, so your views can be heard. The CCCP encourages approaches from developers on the major sites with public consultations at the early stages. See our website for full details.

We had a very interesting consultation and walkabout with the developer of **Bakers Quay**, Dick Bishop, who took the trouble to listen to residents' views. The application was subsequently given our full support and planning has now been granted.

The Quays and City Centre Linkages involved the CCCP early on in the design and planning of this key element.

Regular updates on the **Kimbrose Island/Southgate Street** roadworks can be found on our website to help you avoid the inevitable delays.

Newland Homes, the developer of the **KwikSave site** again approached the CCCP to discuss their revised plans for the site.

For all these and more visit our website:
www.gloucestercccp.co.uk

If you would like to be added to our Planning email circulation list contact:**info@gloscccp.co.uk**

Join our 200 club and the chance to win up to £200 go to the website for details
www.gloucestercccp.co.uk

Friends of Robinswood Hill:

Free trips up the hill for the elderly and disabled.

The Friends of Robinswood Hill are co-ordinating free Land Rover trips to a viewpoint on Robinswood Hill for the elderly, disabled and infirm on **Sunday 13th June 2010** from 11am to 1pm and from 2pm to 4pm.

No booking is required.

Just come to the main car park on Reservoir Road.

There are toilets in the car park.

Tea and coffee will be served by St. Barnabas' Cub Scouts.

The Red Cross will be in attendance throughout the day.

If you require transport to the hill, please 'phone 01452 524174.

Gloucester Dock's
Steam Powered

DUCK RACING!




Tickets in advance
from the Waterways Museum

MONDAY 30th AUGUST
First race 11-00am

Richard Trelfa
01452 304116
07976 383971
rjtrelfa@talktalk.net

Rubbish update: news from the streets about what's been going down, and doesn't get picked up.



If you have any comments or complaints in the first instance report them to the City Council's Helpline 396396, obtain a reference number and if you suspect inaction follow it up with another call.

In February 2010 Gloucester City Council introduced a new recycling and waste collection service throughout the city. Due to the effort of residents to recycle more and waste less, the city's recycling and composting rate increased significantly, with over 300 tonnes of food waste collected in the first month. Throughout 2010, a new recycling service will be introduced for residents who live in over three-storey purpose-built flats tailored to each block, with colour-coded bins. There is unfortunately no overall system planned for three-storey houses in multiple occupation which means a lot of the properties in the city centre are excluded.

In the city centre the new system has led to an increase in the existing problems of bins left permanently obstructing the pavements, overflowing bins, side waste and fly-tipping. The fortnightly collection is confusing and simply means there is double the amount of refuse to collect. There is little sign of take-up of the recycling facilities particularly in the area around Wellington Street and Park Road, both main thoroughfares. The CCCP's Street Care Representative has received countless complaints and discusses these at regular meetings with the City Council's

Neighbourhood Management Co-ordinator and at the Streetcare Forum. Regular walkabouts are also organised by the CCCP to draw the Council's Officers' attention to these troublespots. What incentives could be given to encourage more people to recycle? Any suggestions would be welcome so please contact the CCCP with your ideas. Most of the bags in the picture shown contained drink cans which could so easily have been recycled.

A major hurdle to overcome is to identify the owners of properties in multiple occupation who may be absentee landlords and management companies with little interest in maintaining their properties. The next task is to persuade them to manage the refuse in conjunction with their tenants. We all have an interest in improving the appearance of the city. If you think of a way to help then do contact the CCCP.

You can always get our latest news on the cccp website, regularly updated with everything thats happening in the area.

www.gloucestercccp.co.uk

Diary:

Wednesday, May 26th:

Community Walkabout: join us and identify your concerns first hand. This walk starting at 2 p.m. at the junction of Station Road and Nettleton Road will cover the area between Asda and the Quays. Members of the City & County Councils and the Police will join us.

You can be on the boundary and not know what's going on or you can get involved in the game.
Join the Gloucester CCCP now for a better future for the residents of the city centre.
Anything else is just not cricket.

Wednesday, June 16th:

Co-ordination Group Meeting: start 7.30 p.m. at St Michael's Tower @ the Cross. This is the place to be if you want be in touch with developments in Gloucester. Also we will be making our first 200 Club prize draw.

Wednesday, September 15th:

Co-ordination Group Meeting: start 7.30 p.m. – venue to be confirmed. Keep yourself informed and have your say

Wednesday, December 1st:

Xmas Co-ordination Group Meeting! start 7.30 p.m. – Yacht Club @ Docks. A brief business meeting - then on to a Xmas Quiz and buffet. It could even turn into a party!

Thursdays, July 8th and 15th

Summer Walks: See inside for full details.

There will be other events and meetings during the course of the year - subjects likely to be covered include
Transport in the City, Your Environment, Regeneration - what next?, Policing Priorities - one year on.....
Keep in touch by either joining our mailing list or making regular visits to our website: www.gloucestercccp.co.uk